

ADSL2+ Mini DSLAM MD-20



Digital Subscriber Line Access Multiplexer

The MD-20 is a mini-DSLAM designed for efficient scalability and easy deployment for access networks. This broadband access solution provides an exceptional way to extend ADSL reach further from central office DSLAM equipment to new customers, resulting in increased revenue generating service for both IP and ATM networks. The energy-efficient compact enclosure design fits perfectly inside temperature hardened and space limited rack space of telecommunication curbside cabinet.

Features

- Bring ADSL service to previously unreachable customers
- Supports ADSL, ADSL2, ADSL2+ via POTS/ISDN interface
- Provides 24 ~ 72 ports of ADSL in one 2U chassis
- Modular design with hot swappable and field replaceable units
- Build-in POTS/ISDN Splitters
- System Overheating Protection
- Full diagnostic and alarm reporting capability
- SNMP, Telnet, CLI and Web based management
- Dual A+B -48V DC power input terminal

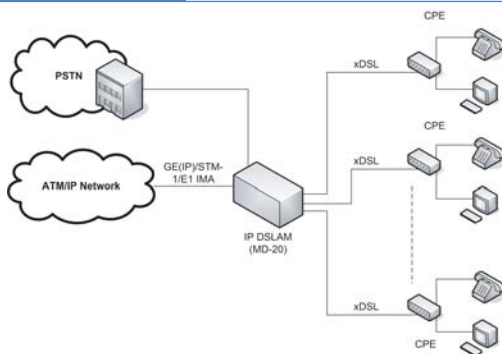
Specifications

| General Specifications | | |
|------------------------|--|---|
| Power | DC | -48 (-42 — -56)VDC |
| Environment | Temperature | -40 — 65°C (Operating); 0 — 70°C (Storage) |
| | Humidity | 5 — 95% non condensing |
| Power Consumption | 130W (maximum) | |
| Dimensions(WxDxH) | 482mm x 304mm x 88mm | |
| Weight | 4.4 Kg with no units installed, fan card 2U: 0.25 Kg | |
| Compliance | ITU-T K.20, K.21, ETSI 300-019, 300-386, EN 60950, Conform to CE requirements | |
| MTBF | 20150 hours | |

| Interface Cards | |
|------------------------------|--|
| Network Interface | STM-1 8 x E1 IMA 2 x 10/100/1000 Based-Tx or 2 x 1000 Base-FX SFP |
| Subscriber Interface | ADSL2+/POTS/ISDN (G.992.1 .2 .3 .5) 24 ports card |
| Service Characteristics | |
| ATM | QoS (UBR, rt-VBR, nrt-VBR, CBR) PVC default priority and PVC-to-VLAN mapping Traffic scheduling/shaping/policing |
| Ethernet | IEEE 802.1d Spanning tree protocol (STP) IEEE 802.3ad Link aggregation IEEE 802.1g port (Tag Based/ LAN) Security on console access |
| OSI Layer 2 Functionality | MAC filtering and count limit Access control list (ACL) Hardware-based multicasting Broadcast control and broadcast rate limit Port-based virtual local area network (VLAN) IGMP snooping v1 and v2 SNMP v1 and v2c Remote Monitoring (1, 2, 3, 9 groups) |

Management Information Base (MIB)
RFC 2514, 2515 ATM MIB, RFC 1213 SNMP MIB II, RFC 1493
Bridge MIB, RFC 1643 Ethernet MIB, RFC 2674 Q MIB, RFC 1757
RMON MIB, group 1,2,3,9, IMA-MIB, SHDSL Line-MIB, ADSL Line
MIB, CTC Union proprietary MIB

Application



Ordering Info

| | |
|--------------------------|---|
| MD-20 Mini DSLAM Chassis | |
| MD-20-MA1A | 19" 2U Rack mount Chassis Up to 3 slots + 1 Slot (for Network Interface card) With DC power & Cooling Fan& Filter |
| Trunk Card | |
| MD-00-GE1A | 2 x 100/1000 Based-TX or 2 x SFP uplink Card (IP) |
| MD-00-IM8A | 8 x E1 IMA Uplink card (ATM) |
| MD-00-ST1A | STM-1 155M uplink card (ATM) |

| Line Card | |
|--------------|--|
| MD-00-AL5A | ADSL 24L ETSI 270 Splitter Annex-A |
| MD-00-AL5B | ADSL 24L ISDN Splitter Annex-B |
| MD-00-SL6A | SHDSL 24L W/O WET Current Annex-A/B, 2 wire, ATM base |
| 1.25G SFP | |
| SFM-7000-S85 | MM, 550m, 850nm, LC, 8.5dBm, (w/o DD) |
| SFS-7010-L31 | SM, 10km, 1310nm DFB, LC, 10.5dBm (w/o DD) |
| SFS-7040-L31 | SM, 40km, 1310nm DFB, LC, 19dBm (w/o DD) |
| SFS-7080-Z55 | SM, 80km, 1550nm DFB, LC, 23dBm (w/o DD) |