

E1 Access Series ERM-DXC

E1 Digital Cross Connect Rack Type



The ERM-DXC is a Rack Type E1 Digital Cross Connect for Fractional E1 network access which is nested in a hub and provides an economic solution for central site users. There are 11 slots available for ERM-DXC I/O cards for installation into the ERM-DXC rack. A CPU card is installed into the last slot for configuration and management. The CPU card provides both local control via an RS-232 craft port and remote management using proprietary NMP software. Each MUX-E1 card may be linked to another ERM-DXC Rack to provide the main function of a DDN network. The ERM-DXC optionally accommodates up to two separate power supplies, which may derive power from AC

(110/220) or DC (-48V) power sources. When two power supplies are installed, the modules provide power sharing and are hot swappable even during the E1 cards' transmission. The ERM-DXC provides all interface connections on the rear panel. BNC and RJ-45 are used for E1 Line interface connection, while optional cable adapters are used to convert the DB-62F DCE ports of the I/O cards to V.35, RS-530, RS-449, RS-232 or X.21. When cards are inserted in slots, LEDs will show the Line status on the front panel. RS-530, RS-449, RS-422, X.21 and X.50. When cards are inserted in slots, LEDs will show the Line status on the front panel.

Features

- All Interface and connectors are on the Rear Panel
- Digital Cross Connect Solution in a Standard 19" Rack
- High density & compact design in a 4U high rack
- Hot Swapping of cards and redundant power supplies supported
- LED Line status display on each card
- Optional Power Source, AC or DC for power supplies
- Standard console port allows terminal to setup and monitor operation locally
- Up to 11 I/O cards may be installed

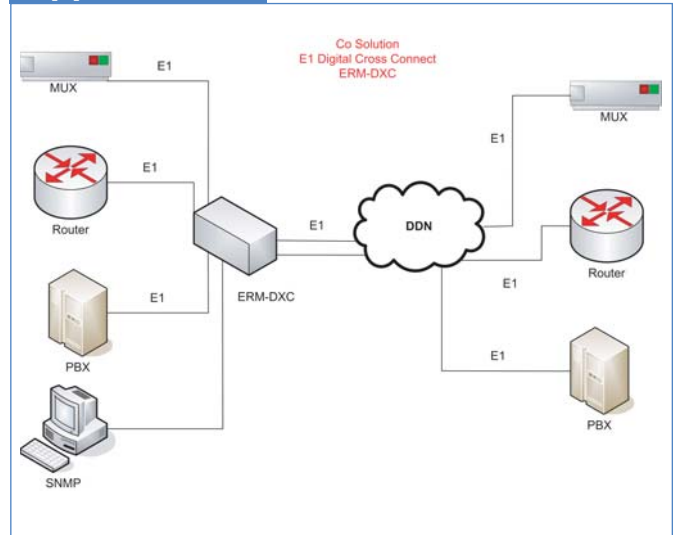
Specifications

Power	AC	90 — 250VAC
	DC	-48VDC
Environment	Temperature	0 — 60°C (Operating); 0 — 70°C (Storage)
	Humidity	0 — 90% non condensing
Power Consumption	80W	
Dimensions(WxDxH)	350mm x 438mm x 176mm	
Weight	8kg (Chassis + dual power card + 8 I/O cards) 450g (per line card)	
Compliance	ITU-G.703, G.704, G.706, G.732, and G.823	

Features - CPU

- Provides the timing systems selection and timing signals
- Provides the control and switching I/O modules parameters and functional conditions
- The core of the 64 lines E1 cross connector
- Hot Swapping of cards and redundant power supplies supported
- With function of Monitor, Cross-Connection

Application



Specifications - 8*E1 Voice I/O

Standard	G.703, G.704
connectors	BNC for unbalanced RJ45 Connector for balanced
Interface connector	High density DB62 Female with appropriate cable adapter
Framing	CCS(PCM31) / CAS(PCM30) CRC4 On/Off
Bit rate	2.048Mbps ±50 ppm
Line code	HDB3
Line impedance	75 ohm / 120ohm switchable via software
Jitter performance	According to ITU-T G.823
Compliance	ITU-T G.703, G.704, G.706 and G.732

Specifications - Ethernet I/O

Standard	IEEE 802.3/ 802.3u	
connector	RJ45	
Speeds	10Base-T/100Base-TX, Full or half duplex	
Frame	Supports 64 to 1522 byte packet length	
Length	Frames for VLAN tagging, etc	
Interface types	Ethernet 10Base-T I/F	
Connector	High density DB62 female with appropriate cable adapter	
Data rate	LAN	10Mbps; half duplex 20Mbps; full duplex
	WAN	N x 64kbps where N=1 to 31 in CCS; N=1 to 30 in CAS

Specifications - 4*E1 Voice I/O

Standard	G.703, G.704
connectors	BNC for unbalanced RJ45 Connector for balanced
Interface connector	High density DB62 Female with appropriate cable adapter
Framing	CCS(PCM31)/ CAS(PCM30) CRC4 On/Off
Bit rate	2.048Mbps ±50 ppm
Line code	HDB3
Line impedance	75 ohm/ 120ohm switchable via software
Jitter performance	According to ITU-T G.823
Compliance	ITU-T G.703, G.704, G.706 and G.732

Specifications - Power

AC	Input 110/ 220 VAC ±15
DC	Input 48VDC (-40 — 57V)

Specifications - Datacom

N x 64 Module, 4 channels, High Speed Data Interfaces	
Interfaces types	RS-530, X.21, V.35, RS-449 and RS-232
Connector	HD68 Female with appropriate cable adapter
Line code	NRZ
Data rate	N x 64kbps, where N equal 1 to 31 in CCS and N equal 1 to 30 in CAS
Async Module, 6 channels, <= 38.4kbps Async or 6 channels, 64/128kbps Sync	
Interfaces types	RS-232(V.24)
Connector	HD62 Female with appropriate cable adapter
Line code	NRZ
Data rate	<=38.4kbps x 6ch or 64/128kbps x 6 channels
G.703/64K Co-directional Module, 4 channels, Co-directional 64K	
Interfaces types	G.703/64K Co-directional
Connector	RJ-45 x 4
Line code	ITU-T G.703/64K, Co-directional
Data rate	64Kbps ±100ppm x 4 channels
Line impedance	120 ohm (balanced)
Frame mode	Unframed only
X.50 Module, 5 channels, <=19.2kbps, supports Async or Sync	
Interfaces types	RS-232(V.24)
Connector	High density DB62 connector, Female(DCE) with appropriate cable
Line code	NRZ
Data rate	From 2.4k — 19.2kbps x 5ch
Loopback type	Local loopback; Remote loopback
64K/128K Module, 3-64K or 3-128K Data Interfaces	
Interfaces types	RS-530, X.21, V.35, RS-449
Connector	High density DB62 female with appropriate cable adapter
Line code	NRZ
Data rate	64kbps x 3ch or 128kbps x 3xh

Ordering Info

Master Unit: Rack Mount ERMDXC Chassis	
ERM-DXC/AC-CH	19 inch, 4U rack mount chassis for AC
ERM-DXC/DC-CH	19 inch, 4U rack mount chassis for DC

Optical I/O card	
ERM-DXC/8E1	8 channels G.703/ G.704(E1) card, n*64K drop and insert
ERM-DXC/DC	4 channels G.703/ G.704(E1) Voice card
ERM-DXC/DC	2 channels Ethernet 10Base-T I/F card

Optional Networking Management Module	
ERM-DXC/ SNMP	SNMP card with both interfaces: RS-232 and 10Base-T

Optional Low-Speed Interface Card	
ERM-DXC-LS-232	4 channels RS-232 (V.24) interface card
ERM-MUX-50	5 channels X.50 interface card

Optional Mid-Speed Interface Card	
ERM-MUX-MS-Serial	3 channels V.35/ X.21/ RS-449/ RS-530 (cable selected) interface card

Optional High-Speed Interface Card	
ERM-MUX-HS-Serial	2 ports V.35/ X.21/ RS-449/ RS-530 (cable selected) interface card

Optional Cable (Non-included item)	
Please contact regional sales representative for detailed information	