

E1/T1 Series ETR01/ ETR04

E1/ T1 Layer One Repeater



The ETR01 and ETR04 are E1/T1 long-haul, Layer One repeaters. The compact design, low cost, and easy operation make the ETR an excellent choice for E1 or T1 link extension. The ETR01 provides a simple 1 pair (Tx/ Rx) in, 1 pair (Tx/ Rx) out repeater interface, while the ETR04 provides a 1 (Rx) in, 4 (Tx) out interface. Setup is extremely simple. Just select the proper termination impedance from the three-position slide switches (75 or 120 Ohm for E1 or 100 Ohm for T1) and then selects the proper line code (AMI or B8ZS for T1, HDB3 for E1).

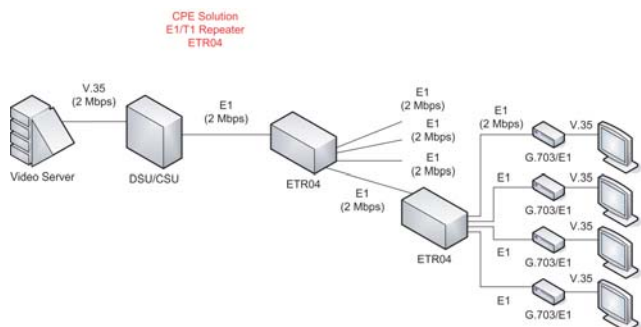
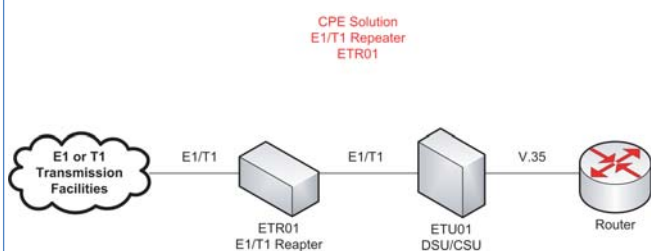
Features

- Fully signal and clock recovery
- Fully integrated transceivers for long-haul T1 or E1 interface
- Receiver sensitivity; fully restores the received signal after transmission through a cable with attenuation of 0 to 36dB @ 772KHz or 0 to 43dB @ 1024KHz
- Selectable E1 75/120 ohm or T1 100 ohm line impedance
- Selectable line codes; AMI, B8ZS, or HDB3

Specifications

E1 Link		
Bit Rate	2.048Mbps	
Connectors	RJ-45 (for ETR01) / BNC (for ETR01-BNC)	
Line Code	AMI/ HDB3	
Line Impedance	75 ohms (unbalanced)/ 120 ohms (balanced)	
Pulse Amplitude	2.37V±10%@75W/ 3.00V±10%@120W	
Zero Amplitude	±0.1V	
Receive Level	0 to -43dB	
T1 Link		
Bit Rate	1.544Mbps	
Connectors	RJ-45	
Line Code	AMI/ B8ZS	
Line Impedance	100 ohms	
Pulse Amplitude	3.00V±10%@100 ohms	
Zero Amplitude	±0.1V	
Receive Level	0 to -36dB	
General Specification		
Power	AC	100—240VAC input power
Power	DC	-48 VDC
Environment	Temperature	0 — 50°C (Operating); 0 — 70°C (Storage)
	Humidity	20 — 80% non condensing
Power Consumption	10W	
LEDs	ETR01/ (-BNC)	PWR, IN1, IN2
	ETR04	PWR, IN
Dimensions(WxDxH)	195mm x 235mm x 45mm	
Weight	1.5kg	
Compliance	ANSI T1.403 and T1.408; ITU I.431, G.703, G.736, G.775 and G.823; ETSI 300-166 and 300-233; and AT&T Pub 62411	

Application



Ordering Info

ETR01	One RJ-45 to one RJ-45 connector, 1 in 1out
ETR01-BNC	One pair RJ-45 in, one pair BNC out
ETR04	One RJ-45 to fourRJ-45 connector, 1 in 4 out