

E1 Access Series ETU02-MUX



Fractional E1 2-Port/ 4-Port Multiplexer with sub E1

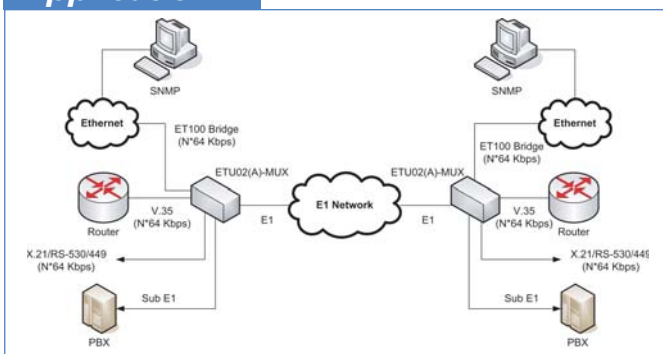
These units provide multiplexing solution for Fractional E1 network services. Up to four DTE devices may be linked to this model at data rates of 56Kbps to 2048Kbps. There is also provision for one optional E1 sub-link which will perform Drop & Insert with user-defined timeslot connections from a PABX or other E1 equipment to E1 network services. The Fractional E1 2 or 4 ports Multiplexer supports local control and diagnostics via an LCD display and LED status indicators located on the front panel or via a serial console port.

These features enable users to easily configure the unit, execute the in-service diagnostics and monitor the network status. The ETU02-MUX provides for optional SNMP Network Management System functions, which allow the user to remotely control and manage the system. These models fully meet all of the E1 specifications including ITU-T G.703, G.704, G.706, G.732, and G.823.

Features

- Terminates E1/ Fractional E1 service
- Integrates high speed data and E1 link with an intelligent fractional E1 access unit
- Supports up to 4 Data channels
- Modular interface design for other I/F solutions
- Optional E1 drop & insert port
- Setup and Control via front Panel with LCD display or RS-232 terminal
- SNMP enabled device (optional)
- Supports rack mounting option

Application



Ordering Info

Modules	
ETU02-SNMP	Optional SNMP card (installs in special slot)
ETU/TTU-V35	V.35 interface module
ETU/TTU-X21	X.21 interface module
ETU/TTU-530	RS-530 interface module
ETU/TTU-449	RS-530 interface module plus RS-449 cable adapter
ETU/TTU-G64K-CO	G.703/64K Co-directional I/F
ETU/TTU-NRZ	NRZ/BNC interface module
ETU/TTU-ET100	10/100Base-T Ethernet Bridge
ETU/TTU-ET100R	10/100Base-T Ethernet Router
E1	Sublink E1 Link Card (module)

Specifications

E1 & Sub-E1 Link		
Framing Framed	CCS(PCM31)/ CAS(PCM30)/ CRC4 on/ off	
Bit rate	2.048Mbps ±50 ppm	
Line code	AMI/ HDB3	
Line impedance	75 ohm(BNC)/ 120 ohm(DB-15)	
Relative receive level	0 to -43dB	
Transmit level		
Pulse amplitude	Nominal 2.37V ±10% for 75ohm Nominal 3.00V ±10% for 120ohm	
Zero amplitude	±0.1V	
Transmit frequency tracking	Internal timing ±100 ppm Loopback timing ±100 ppm External timing ±100 ppm	
Jitter performance	According to ITU-T G.823	
Interface connectors	15-pin, D-type female, BNC	
User Data Channel		
Data Rate	N x 56Kbps or N x 64Kbps, Where N equal 1 to 31 in CCS, And N equal 1 to 30 in CAS	
Control signals	CTS constantly ON DSR constantly ON, except during test loops DCD constantly ON or follows RTS, except during signal loss	
Loopback	Line loopback; Payload loopback Local loopback; DTE loopback	
BERT Test patterns	511, 2047, 2e15-1, 2e20-1, QRSS, 2e23-1, All 1, All 0, Alt, 0011, 3 in 24, 1 in 16, 1 in 8, 1 in 4 test patterns	
Clock modes		
Clock mode 0 (DCE1)	Receive and transmit clock (recovered) to the synchronous DTE	
Clock mode 0 (DCE2)	Receive and transmit clock (internal oscillator) to the synchronous DTE	
Clock mode 0 (DCE3)	Receive and transmit clock from the Synchronous DCE (from ETC and ERC pin)	
Clock mode 0 (DCE4)	Receive and transmit clock from the Synchronous DCE (all from ETC pin)	
General Specification		
LEDs	Alarm LED Sync Loss, Signal Loss, Alarm (AIS, MRAI, RAI), TD, RD, Error, Test.	
Power	AC 90 — 250VAC	
Environment	Temperature	0 — 60°C (Operating); 0 — 70°C (Storage)
	Humidity	0 — 90% non condensing
Power Consumption	20W	
Dimensions(WxDxH)	430mm x 235mm x 45mm	
Weight	2.9kg	
Surge Protection	DC Sparkover Voltage: 230 ±10% Impulse	
Compliance	CE, FCC part 15 Class A, ITU G.703, G.704, G.706, G.732, G.823	