

IDSL Modem Series

I-DSL128



2-wire 2B1Q Leased Line Modem

DSL128 (Network Termination Unit) is designed for high speed data communication and internetworking transport services. It utilizes 2B1Q line coding and echo cancellation technique for full duplex and synchronous data transmission over a 2-wire line up to 5.5 Km. I-DSL128 supports power-on self-test and diagnostic capability for optimal speed calibration and trouble shooting. The diagnostic capabilities include Analog loopback, Digital loopback and BER Test. I-DSL128 is elegantly designed and easy to operate.

Its front panel is equipped with one 16 x 2 LCD, 4 push-buttons for configuration and 9 LEDs for status indication. The configuration procedure goes through a friendly menu-driven program. I-DSL128 is designed and suitable for providing Remote Access, LAN/WAN interconnection, Host connection, Internet transport etc. meeting high speed data services.

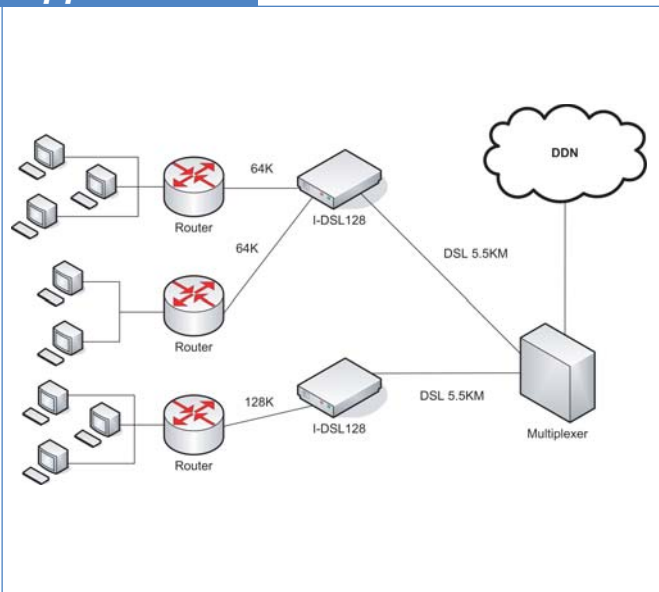
Features

- 2-wire full duplex operation
- DTE interface alternatives: EIA 530, RS449(via DB37), V.35 (via M34), V.36(via DB37)
- Line Coding: 2B1Q
- Menu-driven LCD (16 x 2), control panel for easy operation
- IRange: Up to 5.5Km over 26 gauge wire
- Synchronous: 64K or 128Kbps

Specifications

Network Interface	
Type	Full duplex with adaptive echo cancellation
Line coding	2B1Q
Line type	Unconditioned twisted pair, 19-26 AWG
Surge protection	Meets FCC Part 68 subpart D
Connector	RJ-11
Diagnostics Test	
Loopbacks	Local Loopback ITU-T V.54 DTE Loopback ANSI T1.601 Payload Loopback
Operation Range (BER<10 ⁻⁷)	
2-wire mode	Up to 5.5Km over 26 gauge wire Up to 7.0Km over 24 gauge wire
Customer DTE Interface	
Number of Ports	1+1(optional)
Data Rate	64K or 128Kbps (synchronous)
Connector	EIA530, RS449 (via DB37 adapter), V.35 (via M34 adapter), V.36 (via DB37 adapter)
General Specifications	
Standard	TBA
Clock Source	Internal, Line, DTE-A or DTE-B
Keypad	4 operation keys
LEDs	PWR, ACT, TST, DTE-A [TD, RD, ERR], DTE-B [TD, RD, ERR]
Power	AC 100 — 240VAC
Environment	Temperature 0 — 50°C (Operating); -20 — 65°C (Storage) Humidity 10 — 90% non condensing
Power Consumption	10W
Dimensions(WxDxH)	19.5cm x 16.8cm x 4.8cm
Weight	850g
Compliance	CE, FCC
MTBF	TBA

Application



Ordering Info

I-DSL128-AC	Standalone IDSL Modem, 2-wire, 2B1Q leased line CPE modem with one DTE interface connector, LCD panel, AC type
-------------	--

IDSL Modem Series I-DSL64



2-wire 2B1Q Leased Line Modem

I-DSL64 is a G.703 64K co-directional Network Termination Unit designed for low-speed data communication and internetworking transport services. It utilizes 2B1Q line coding and echo cancellation technique for full duplex and synchronous data transmission over a 2-wire line up to 5.5 Km. I-DSL64 supports power-on self-test and diagnostic capability for troubleshooting. The diagnostic capabilities include analog loopback, digital loopback and BERT TEST. I-DSL64 is an easy to operate and elegantly designed equipment. Its front panel is equipped with one 2 x 16 LCD, 4 buttons for configuration and 7 LEDs for status indication. The configuration procedure goes through a friendly menu-driven program.

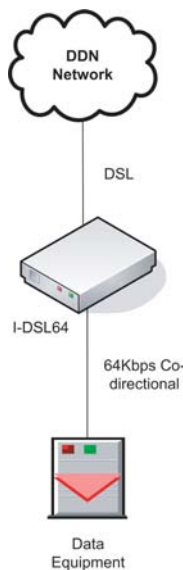
Features

- 2-wire full duplex operation
- Line coding: 2B1Q
- Menu-driven LCD (2 x 16), control panel for easy operation
- Range: Up to 5.5Km over 26 gauge wire
- Synchronous: G.703/64KCo-directional

Specifications

Network Interface		
Type	Full duplex with adaptive echo cancellation	
Line coding	2B1Q	
Line type	Unconditioned twisted pair, 19-26 AWG	
Surge protection	Meets FCC Part 68 subpart D	
Connector	RJ-11	
Diagnostics Test		
Loopbacks	Local Loopback ANSI T1.601 Payload Loopback	
Operation Range (BER<10⁻⁷)		
2-wire mode	Up to 5.5Km over 26 gauge wire Up to 7.0Km over 24 gauge wire	
Customer G703/64K Co-directional interface		
Data rate	64K	
Connector	DB15 Female	
Line Code	Co-directional	
General Specifications		
Standard	G.703	
LEDs	PWR, ERR, SYNC, BERT, Tx, Rx	
Power	AC	90 — 240VAC
	DC	-48VDC
Environment	Temperature	5 — 50°C (Operating); -20 — 65°C (Storage)
	Humidity	10 — 90% non condensing
Power Consumption	10W	
Dimensions(WxDxH)	19.5cm x 16.8cm x 4.8cm	
Weight	850g	
Compliance	CE, FCC	
MTBF	TBA	

Application



Ordering Info

I-DSL64	Standalone IDSL Modem, 2-wire, 2B1Q leased line CPE modem, support G.703/64 co-directional transmission LCD panel, support AC or DC type.
---------	---