

T1 Access Series TTU02-MUX



Fractional T1 2-port/ 4-port multiplexer with subT1

The TTU02-MUX provides an economic multiplexing solution for DS1 and Fractional DS1 DSU/CSU network services. Up to four DTE devices may be linked to a TTU02-MUX at data rates of 56Kbps to 1544Kbps. It also provides for one optional DS1 sub-link which may be connected over a public DS1 network. The DS1 sub-link will perform Drop & Insert with user-defined timeslot connections from a PABX or other DS1 equipment to DS1 network services. The TTU02-MUX supports local control and diagnostics via an LCD display, keypad and LED status indicators located on the front panel.

A Console port (RS-232) is also available for local configuration via a terminal or modem-terminal combination. These features enable users to easily configure the unit, execute the in-service diagnostics and monitor the network status. TTU02-MUX also provides optional SNMP Network Management System functions, which allow the user to remotely configure, control and diagnose the system.

Features

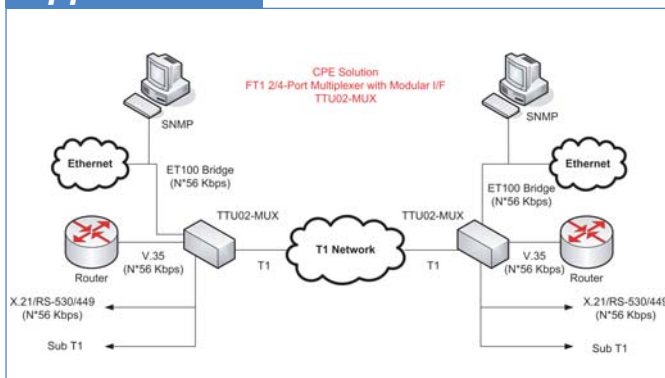
- Terminates Fractional T1 service
- Integrates high speed data and T1 link with an intelligent T1/ Fractional T1 Access Unit
- Optional DS1(T1) drop & insert port
- Setup and Control via front Panel with LCD display or serial console
- Selectable data rates: Nx64Kbps, Nx56Kbps (N=1~24)
- Supports up to 4 Data channels
- SNMP enabled device
- Transmit Timing Modes include recovery timing, transparent timing, dataport timing and internal oscillator.

Specifications

General Specification		
Number of Ports	TTU02-MUX.2	2 ports
	TTU02-MUX.4	4 ports
Data rate	Unframe, 1544Kbps, N x 56Kbps or N x 64Kbps where n = 1 to 24	
Craft port	RS-232, DB9F: 19200, 8, N, 1	
Power	AC	100 — 240VAC
	DC	18 — 72VDC
Environment	Temperature	0 — 50°C (Operating); 0 — 70°C (Storage)
	Humidity	0 — 90% non condensing
Power Consumption	10W	
Key Pad	4 operation keys	
LCD display	16 x 2 characters	
LEDs	17 status LEDs	
Dimensions(WxDxH)	430mm x 235mm x 45mm	
Weight	1.5kg	

DS1 (T1) Link Specification		
Connector	Link	15 pin, D-type Female
	Sub-Link	15-pin, D-type female and RJ-45 (ANSI T1.403)
Framing	Unframed/ Framed/ SF (D4)/ ESF	
Bit rate	1.544Mbps	
Line code	AMI/ B8ZS	
Line impedance	100 Ohms (balanced)	
Relative receive level	0 to -36dB	
Jitter performance	According to ITU-T G.824	
Transmit level	Pulse amplitude	Nominal 2.37V ±10% for 75ohm
		Nominal 3.00V ±10% for 120ohm
	Zero amplitude	±0.1V
Transmit frequency tracking	Internal timing ±30 ppm	
	Loopback timing ±50 ppm	
	External timing ±100 ppm	
Compliance	ANSI T1.403, AT&T TR-62411, ITU G.703, G.704, G.706 and G.733	

Application



Ordering Info

TTU02-MUX.	X/	XXX-	X
	ports type	Optional I/F Modules	Power
	2		AC
	4		DC

Modules	
TTU02-SNMP	Optional SNMP card (installs in special slot)
ETU/TTU-V35	V.35 interface module
ETU/TTU-X21	X.21 interface module
ETU/TTU-530	RS-530 interface module
ETU/TTU-449	RS-530 interface module plus RS-449 cable adapter
ETU/TTU-G64K-CO	G.703/64K Co-directional I/F
ETU/TTU-NRZ	NRZ/BNC interface module
ETU/TTU-ET100	10/100Base-Tx Ethernet Bridge
ETU/TTU-ET100R	10/100Base-Tx Ethernet Router